

State of Wyoming Corner Record

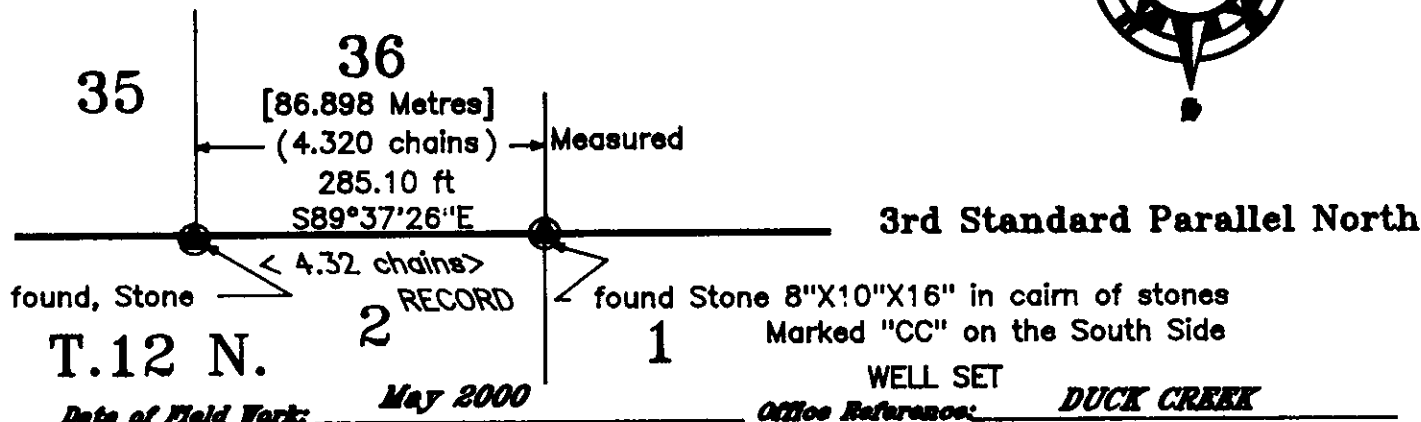
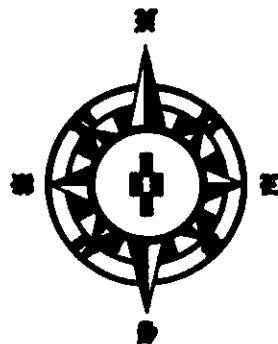
(In compliance with the CORNER PERPETUATION AND FILING ACT, Wyoming Statutes, 1977, Section 35-11-101, et seq., and the Rules and Regulations of the Board of Registration for Professional Engineers and Professional Land Surveyors)

The reverse side of this form may be used if more space is needed.

*The Record of the original survey and the citation of the source of the historical information (if the corner is lost or obliterated). The description of the corner monument evidences as found and/or the monument and its accessories as established to perpetuate the location of this corner. A sketch of the relative location of this Monument, accessories, and reference points with the course and distance to adjacent corner (s) (if determined during this Survey). The Method and Rationale used for the reestablishment of lost and obliterated corner.*

Intersect 3rd Correction Line North 4.32 chains East of the Standard Corner for Sections 35 & 36 set Granite Boulder 8"X10"X16" for closing corner.  
 G.L.O.:Aug 1868 E.D.Bright ? ... North between Sections 1 & 2 of T.12 N. R.68 W. ... 84.27 chains  
 Found: Boulder with "CC" carved plainly on the South Side, said stone was well set in a cairn of stones. I painted the stone YELLOW so I could see it while searching for other points and I set a 2"X4" 5 feet long, painted Yellow on the North side of the stone, said fir 2X4 was driven into the ground leaving approx. 3 feet above the surface of the ground.

T.13 N.  
 R.68 W. of the 6th P.M.



Cross Index Diagram

3rd Standard Parallel North

Firm/Agency, Address

Terrestrial Surveying & Mapping Co.  
 "Your Friendly Neighborhood Surveyor"  
 1127 Terry Ranch Road  
 Cheyenne, Wyoming 82007  
 Telephone Number: (307) 634-9360

This Corner Record was prepared by me or under my direction and supervision.

SEAL & SIGNATURE

	1	2	3	4	5	6	7	8	9	10	11	12	13	14	15	16	17	18	19	20	21	22	23	24	25
A																									
B																									
C																									
D																									
E																									
F																									
G																									
H																									
I																									
J																									
K																									
L																									
M																									
N																									
O																									
P																									
Q																									
R																									
S																									
T																									
U																									
V																									
W																									
X																									
Y																									
Z																									

T.12 N. R.68 W. of the 6th P.M.

Closing Corner Name: Corner Section: 1&2 T.12 N. R.68 W. 6th P.M. Cross Index No. A~21

GCDB: 600700

